





Published in 2024

FORMICA COLLECTION

The building blocks of your imagination.

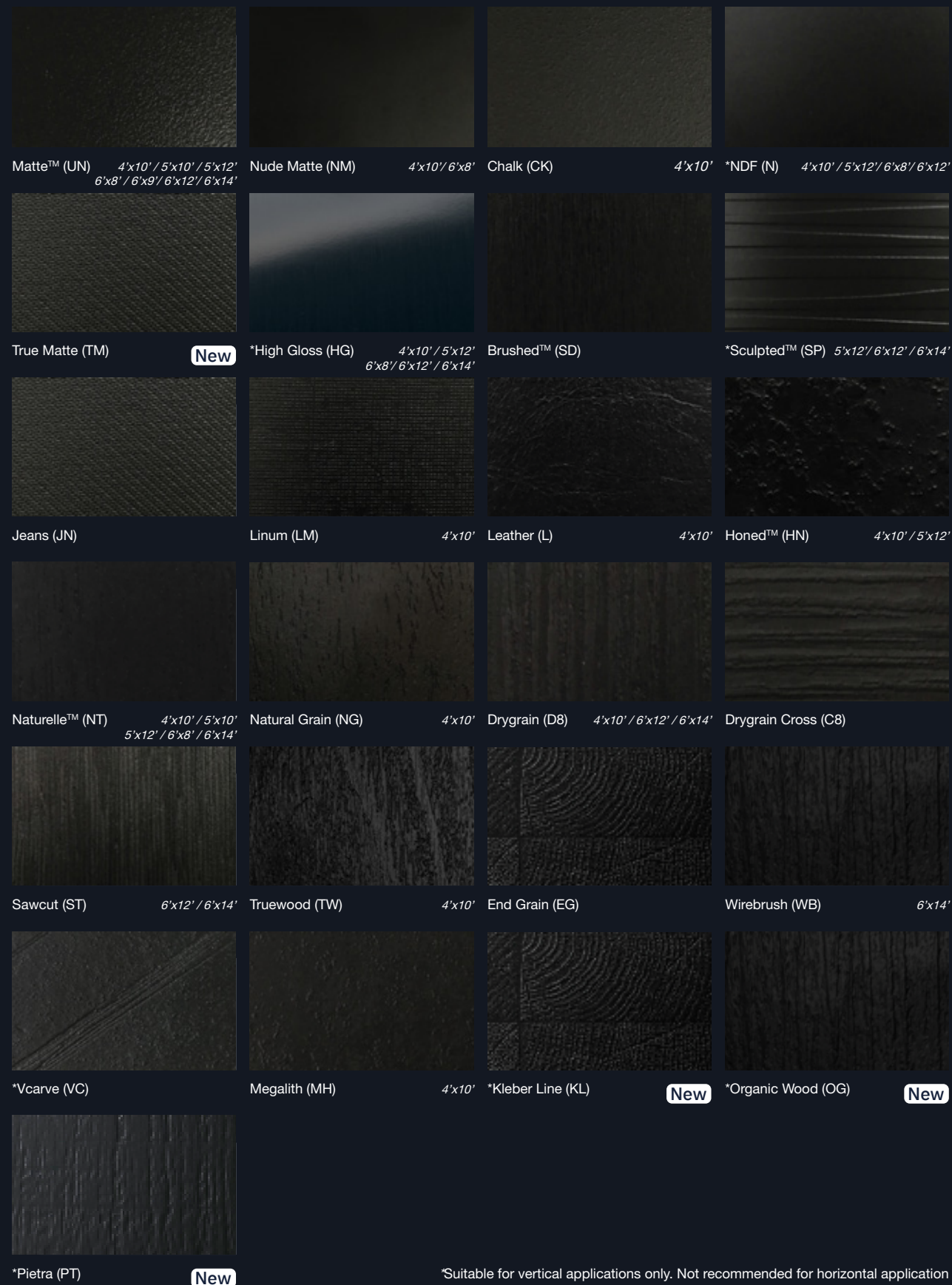
Surfaces that ignite the senses.
Surfaces that care for your space so you can live in
them better, longer.

As Makers Of Change, One Surface At A Time, Formica creates next-generation surfaces that bring meaning to your cherished spaces. Formica surfaces are fundamental building blocks that impart life and energy to your rooms. Now available in Indonesia, our distinctive collections are transportive, whether to outer or inner worlds. Versatile, enigmatic, alluring — they are as eye-catching or as understated as you design them to be.

Let's stay in touch!

[Stock Enquiries](#) | [Product Information](#) | [Samples](#)

Textures



Formica® Laminate **PROTEC+**

NEXT GENERATION SURFACING MATERIALS *by* FORMICA GROUP

Next Generation of Surfacing Materials.

A next-generation antimicrobial surfacing material that shows a reduction in microbe count on a surface by up to 99%, with high wear and scratch-resistant properties.

Designed to work in conjunction with regular cleaning and disinfecting practices, Formica® Laminate^{PROTEC+} is a strong and post-formable laminate that provides high protection, and reduces cross contamination with its antibacterial, antifungal properties.

This high-performance range[^] is created for protection throughout its lifespan*, for hygienic surfaces for you and your family.

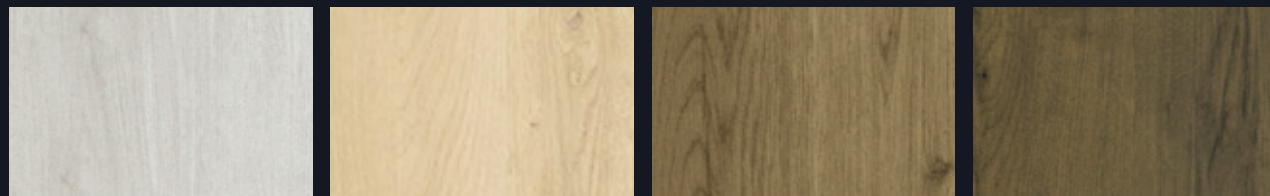
PROPERTIES

 Antimicrobial
(Antibacterial & Antifungal)

 Enhanced Wear & Scratch-resistant

Tested in accordance with JIS Z2801 and ASTM G21
[^]This technology does not cover for Pearlescent and DecoMetal® range
 *Provided the surface is properly maintained in accordance with Formica's maintenance and care guidelines and the surface is not subject to harsh environments, damage, scratches and excessive wear & tear.

Wood Grains in Partial Crown Grain

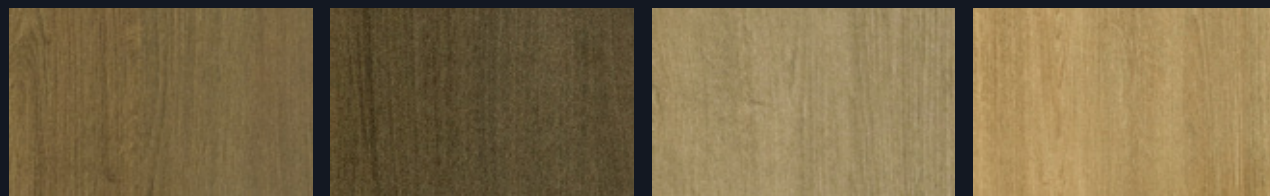


7394NG
Planked Drift Oak

7412NG
Planked Raw Oak

9312NG
Planked Urban Oak

9658NG
Planked Havana Oak

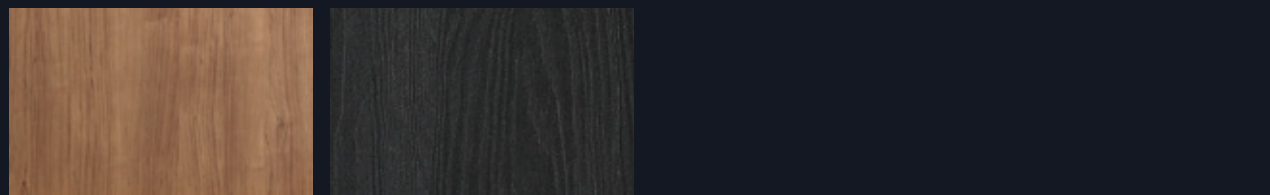


7389NT
Select Tan Oak

7391NT
Select Burnt Oak

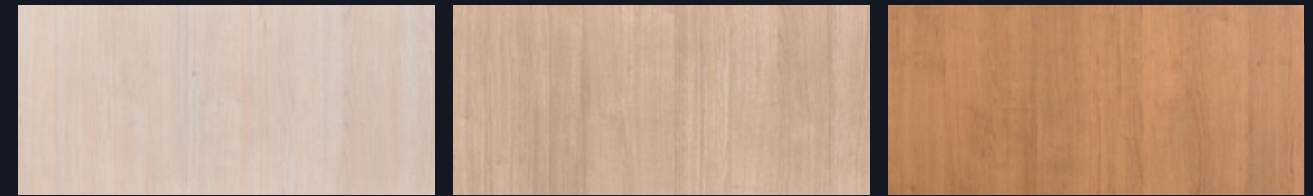
7392NT
Select Dry Oak

7393NT
Select Fawn Oak



5485NT
Spice Maple

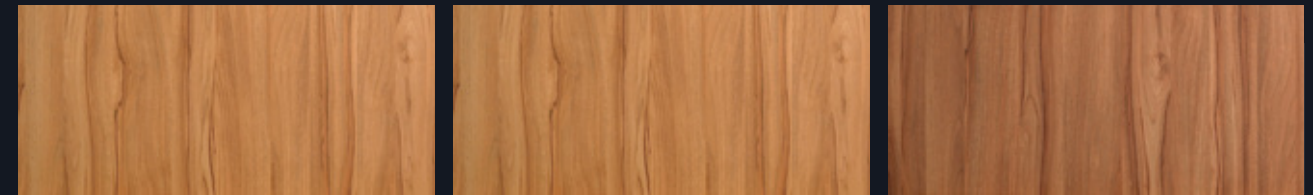
1541NT
Carbon Cedar



0870NT
Dawn Cherry

0867NT
Sand Cherry

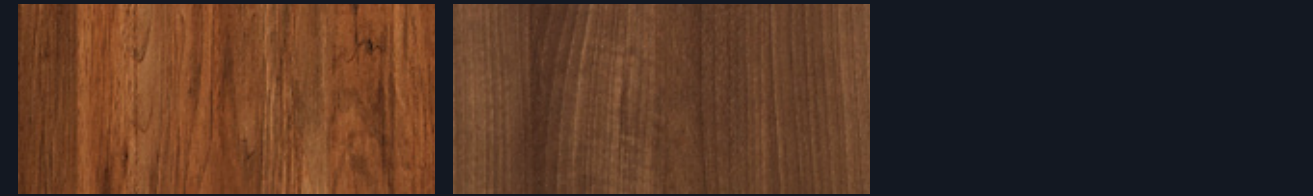
0874NT
Hazelnut Cherry



5486NT
Classic Walnut

5486UN
Classic Walnut

5487NT
Oiled Walnut



6055D8
Aged Walnut

5150NT
American Walnut



6404D8
Bleached Elm

6405D8
Bisque Elm

6407D8
Honey Elm



6404NT
Bleached Elm

6405NT
Bisque Elm

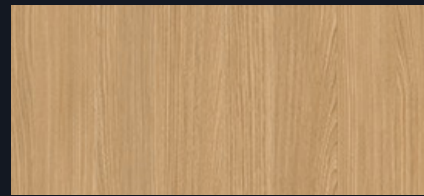
6407NT
Honey Elm



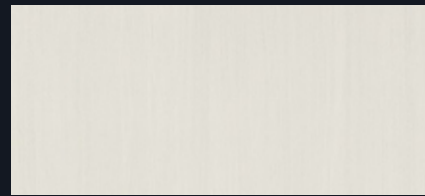
Wood Grains *in Partial Crown Grain*



8843D8
Natural Ash



8844D8
Aged Ash



8841D8
White Ash



0869NT
Powdered Oak



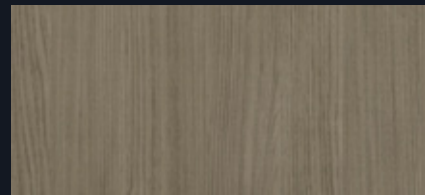
0868NT
Beige Oak



8843NT
Natural Ash



8844NT
Aged Ash



8842D8
Weathered Ash



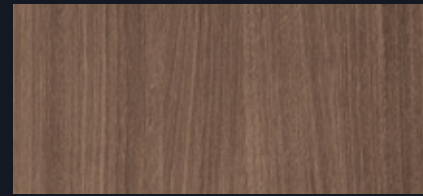
1079NT
Natural Oak



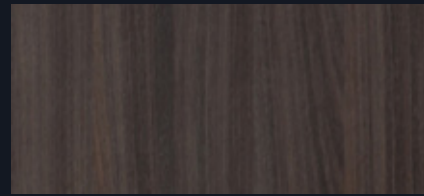
1079ST
Natural Oak



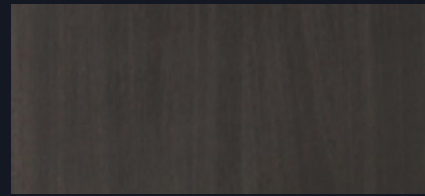
5478NT
Sand Oak



8846D8
Oiled Legno



8847D8
Jarrah Legno



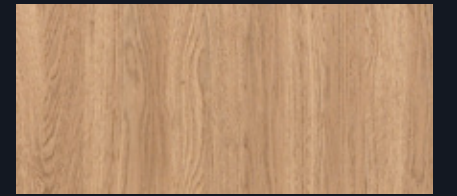
8848D8
Blacken Legno



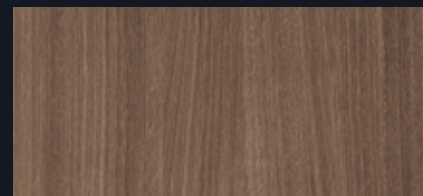
3737NT
Light Oak



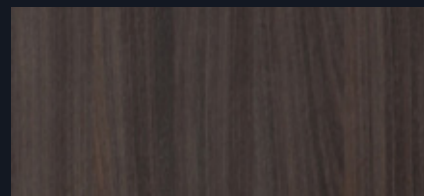
3737UN
Light Oak



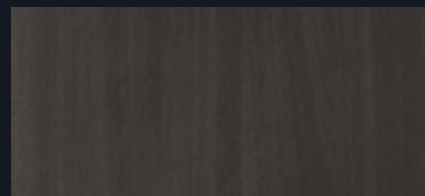
5887NT
Millennium Oak



8846NT
Oiled Legno



8847NT
Jarrah Legno



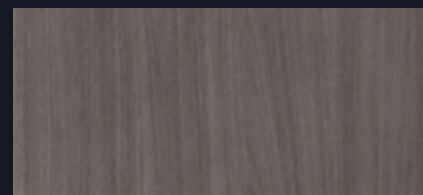
8848NT
Blacken Legno



8854NT
Alabaster Oak



8967NT
Logan Oak



8845NT
Bleached Legno



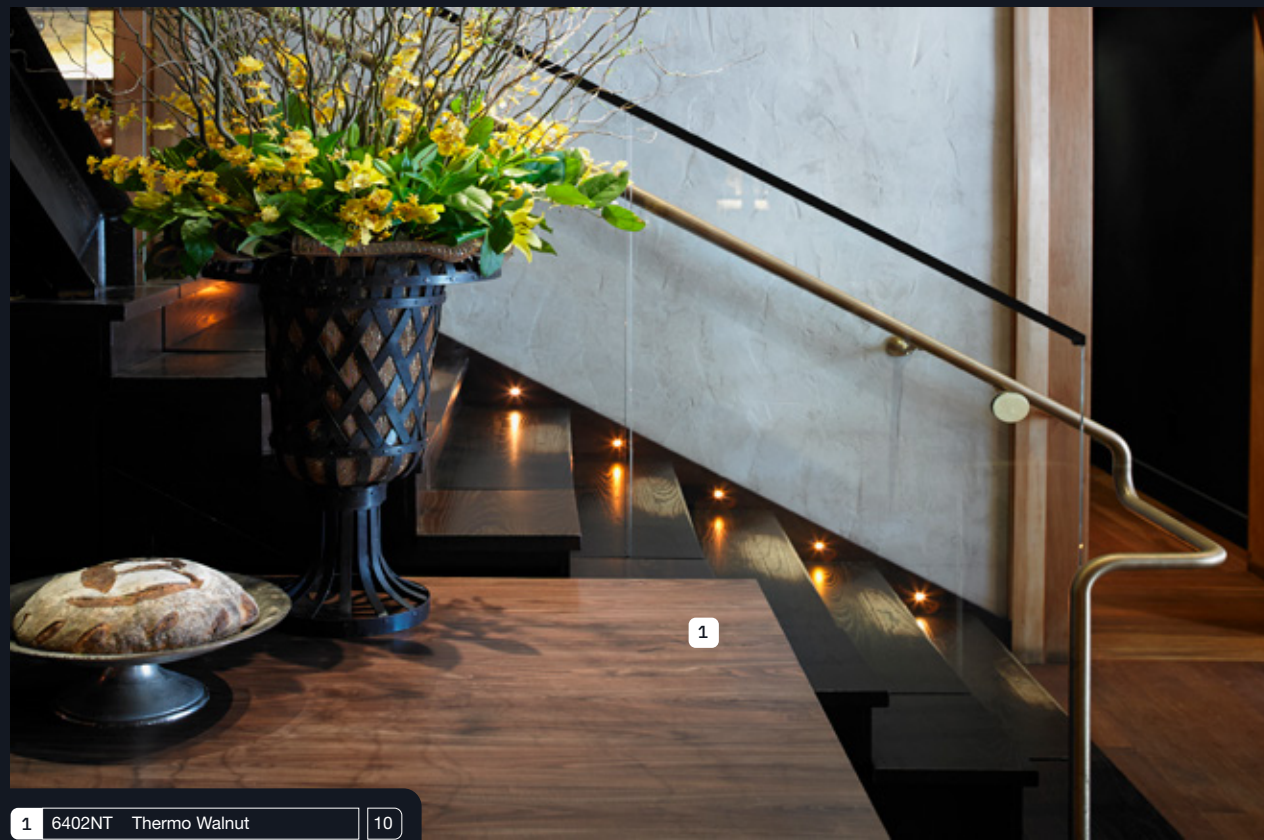
8853D8
Rural Oak



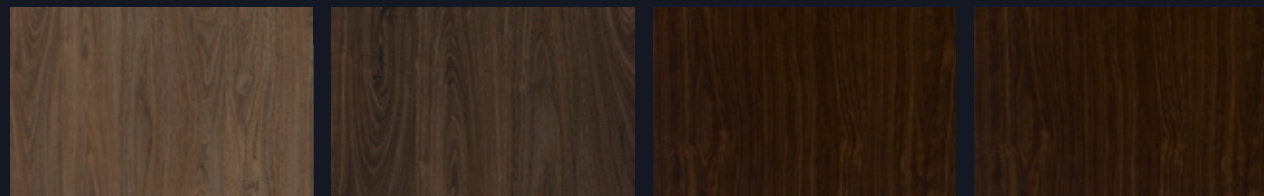
8853NT
Rural Oak



Wood Grains in Full Crown Grain



1 6402NT Thermo Walnut 10



6401NT
Natural Walnut

6402NT
Thermo Walnut

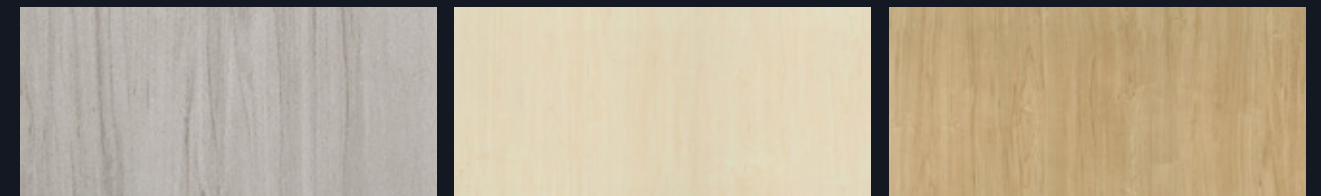
7188NT
Lincoln Walnut

7188UN
Lincoln Walnut



6372NT
White Washed Birchply

8910NT
Raw Birchply



9222NT
Grayed Maple

8905NT
Waxed Maple

8906NT
Danish Maple



7566UN
Natural Maple

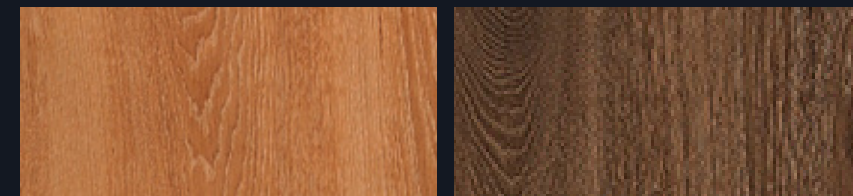
7012NT
Amber Maple

9966NT
Hill Top Maple



7395UN
Tassili

2567UN
Copper Beech New

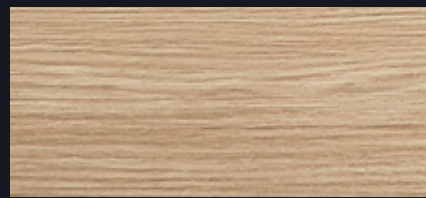


6053NT
Chalet Oak

6052NT
Cottage Oak



Wood Grains in Horizontal Grain



8801C8
Aged Ash Cross

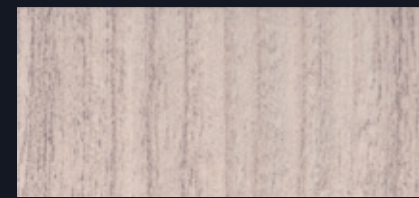


1 8578NT Sund Elm 14

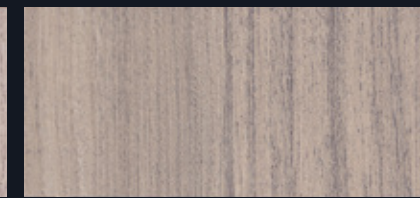
2 8793NM Green Slate 23



Wood Grains in Straight Grain



7399D8
Bianco Cherry



7398D8
Comfort Gray Cherry



9281NG
Ash Riftwood



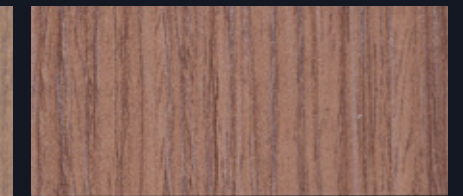
6412NG
Oak Riftwood



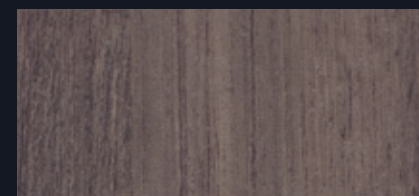
2726NT
Natural Beech



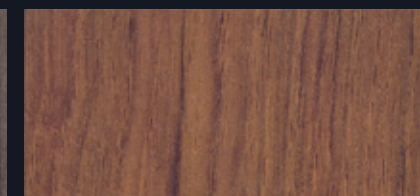
5883NT
Pecan Woodline



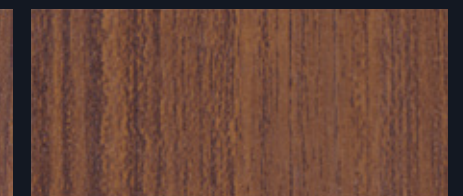
9205UN
Legno Finitione Brown



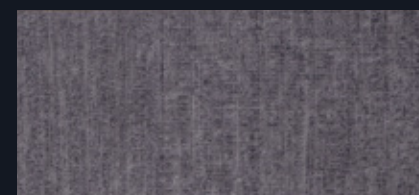
8860NT
Weathered Teak



8849NT
Natural Teak



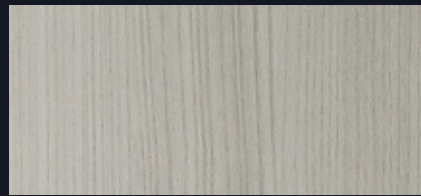
T116NT
Teak Allover



9451NT
Slate Cherry



Wood Grains *in Straight Grain*



8577NT
Fjord Elm



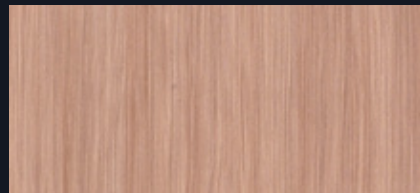
8578NT
Sund Elm



0860NT
Blond Afromosia



0861NT
Olive Afromosia



0862NT
Cherry Afromosia



9436D8
Dry Blackwood



9437D8
Toffee Blackwood

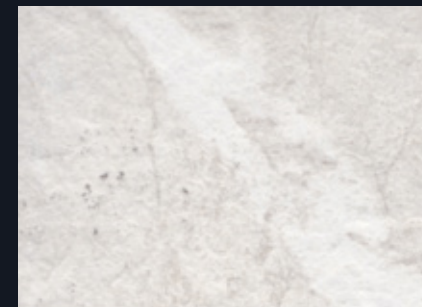


5483NT
Mocca Firwood



0812NT
Cinnamon Ash

Stones



0964PT
Veneto Marble



New 0995PT
Venetian Plaster Urban

New



Disclaimer: 0964PT Veneto Marble and 0995PT Venetian Plaster Urban in Pietra (PT) finish are suitable for vertical applications only. Not recommended for horizontal application



Stones



0992KL
Slate Storm



New

0993KL
Slate Urban

New

Disclaimer: 0992KL Slate Storm and 0993KL Slate Urban in Kleber Line (KL) finish are suitable for vertical applications only. Not recommended for horizontal application



Stones



5018NM
Calacatta Cava



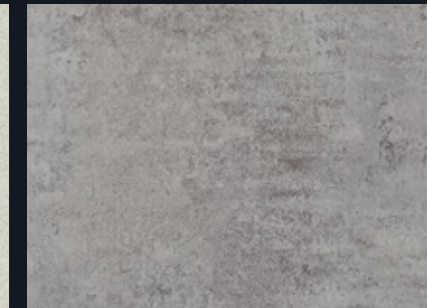
3460HG
Calacatta Marble



9306NM
White Bardiglio



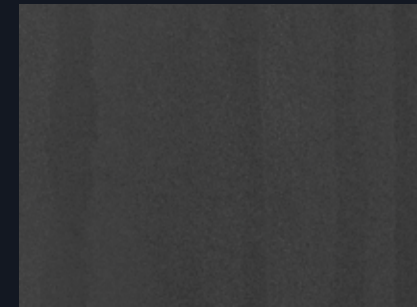
9511CK
Layered Sand



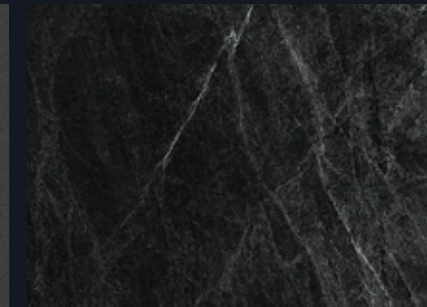
6363HN
Elemental Ash



8830HN
Elemental Concrete



9510CK
Layered Black Sand



3476HN
Jet Sequoia



7403NM
Nero Marquina



Metallic Stones



1 7391NT Select Burnt Oak 6

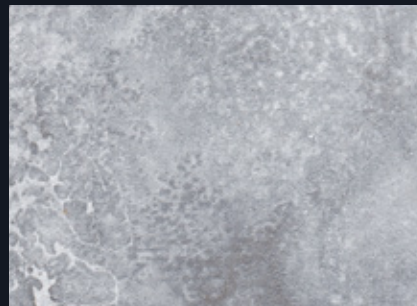
2 7383HG Steel Jade



7377MH
White Jade



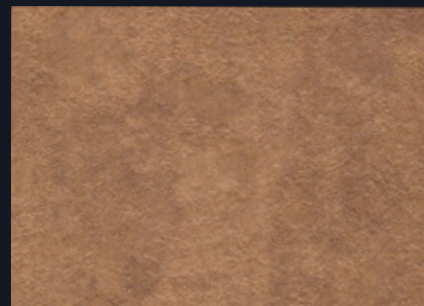
7378MH
Silver Jade



7381MH
Blue Gem



7382MH
Bronze Desert



7380MH
Gold Stone



7379MH
Copper Stone

Disclaimer: Antimicrobial technology is unavailable for Metallic Stones. Not recommended for horizontal application.

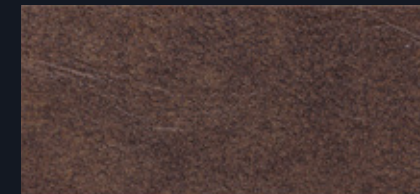


Pearlescent

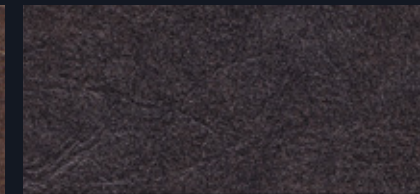


1 8845NT Bleached Legno 8

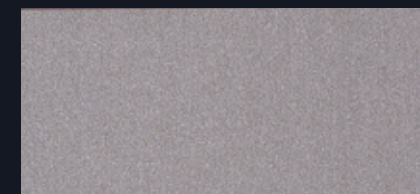
2 7382MH Bronze Desert 18



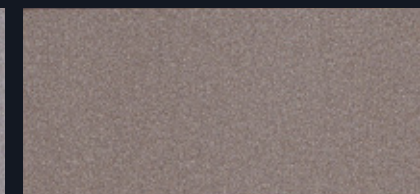
9365L
Bronze Leather



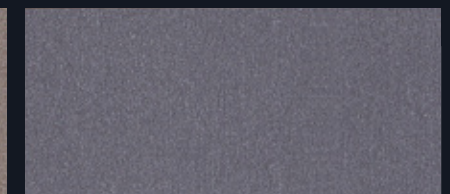
9366L
Smoky Shimmer Leather



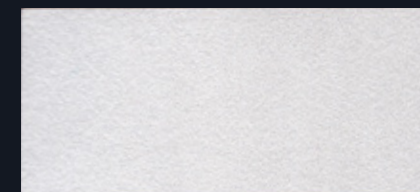
7158SD
Cosmic Dusk



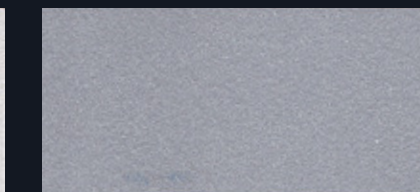
8816SD
Frosted Champagne



8818SD
Frosted Graphite



7157UN
Cosmic Dawn



7168UN
Metal Pearl Silver

Disclaimer: Antimicrobial technology is unavailable for Pearlescent and Metallic Leather. Not recommended for horizontal application.



Patterns



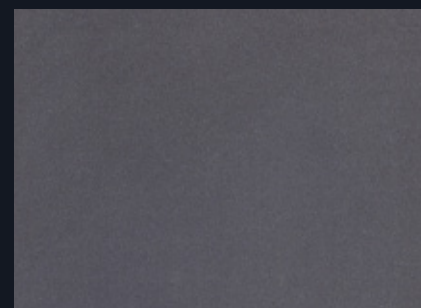
1 5017NM Watercolor Steel 20



7387NM
Quartet Chip



8387NM
Black Chip



5017NM
Watercolor Steel



4971PA
Natural Gray Felt



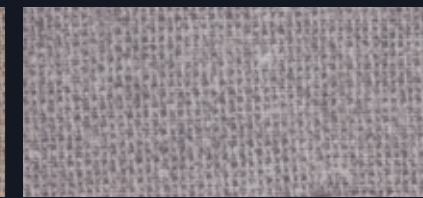
4974PA
Green Felt



3505CK
Storm Solidz



8797LM
Raw Weave

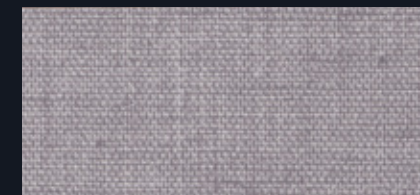


New 5479LM
Grigio Weave

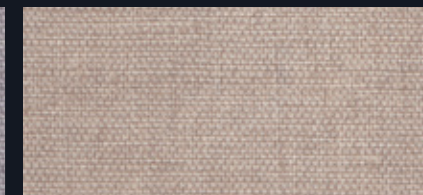


New 9287LM
Grigio Antracite Weave

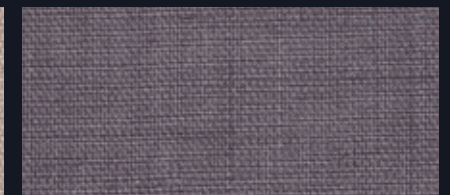
New



6445LM
Greige Textile



6444LM
Clay Textile



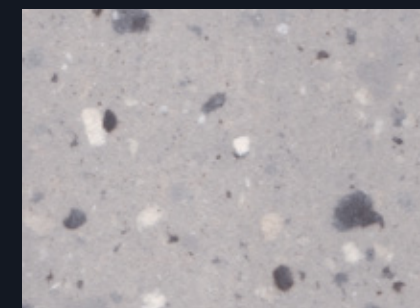
6446LM
Charcoal Textile



9532LM
Beige Plaid

Design Made From Reclaimed Materials

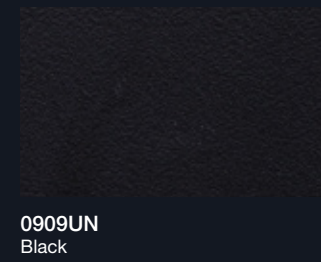
8812 Tinted Paper Terrazzo is made from small fragments of Formica's post-production solid color paper to create a new paper sheet. Hence no one sheet is exactly alike.



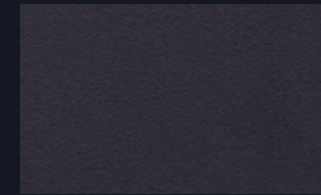
8812CK
Tinted Paper Terrazzo



Solid Colours

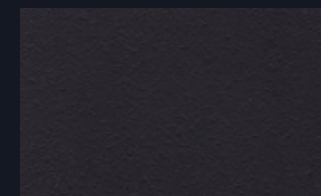


0909UN
Black

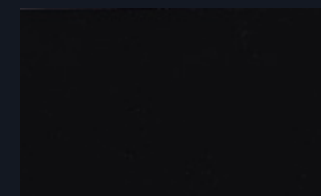


0909TM
Black

New



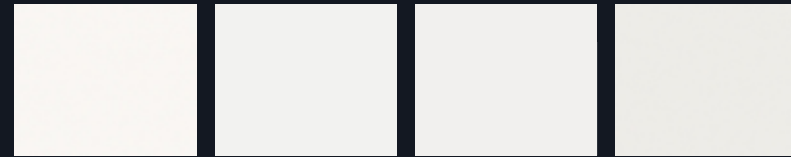
0909CK
Black



0909HG
Black



0459UN Brite White 3200UN Ultra White 1040UN Alpino 0933UN Mission White



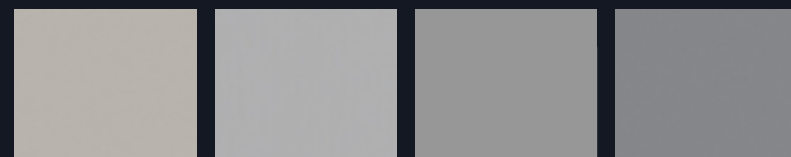
7197UN Dover White 2010UN Malibu 7918UN Neutral White 7923UN Surf



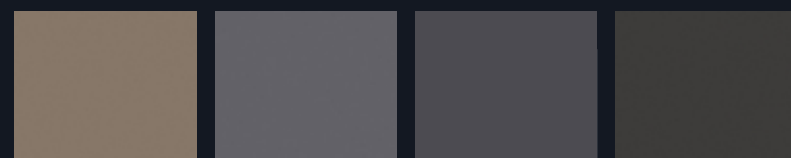
1093UN Aries 7463UN Sail White 7460UN Ivory 7858UN Pumice



0464UN Graystone 7921UN Birch 7929UN Oyster Grey 0784UN Peruvian Clay



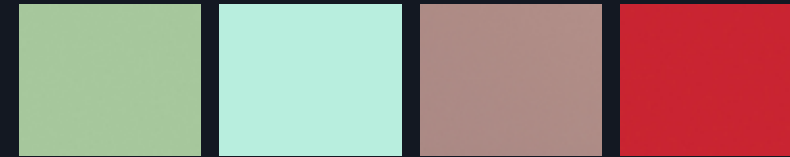
7902UN Platinum 0961UN Fog 2020UN Tornado 7928UN Mouse



5342UN Earth 7912UN Storm 0806UN Battalon 0837UN Graphite



7940UN Spectrum Yellow 3210UN Levante 0232UN Juicy Pink 7384UN Magenta



8794UN Enamel 7433UN Aqua Marina 8238UN Blush 0845UN Spectrum Red



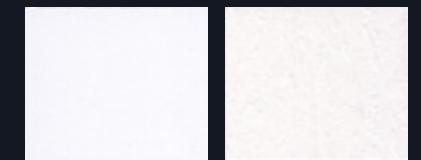
8793UN Green Slate 8821UN Just Blue 8233UN Violet Ash 7966UN New Burgundy



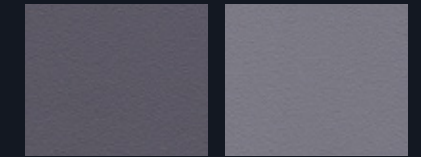
8796UN Algae 7846UN Grotto 8734UN Lavender Ash 8140UN Brick



8244UN Night Forest 8822UN Denim 7851UN Spectrum Blue 7914UN Marine Blue



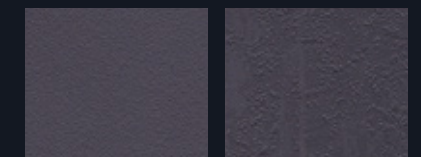
7949HG White 0933WB Mission White



7912TM Storm 7928TM Mouse

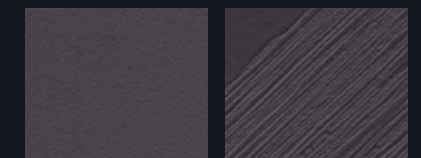
New

New



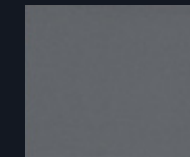
0806TM Battalon 0806MH Battalon

New



0837TM Graphite 0837VC Graphite

New



8793NM Green Slate



Formica Cora™ Surfaces with Soul

The name Cora, derived from the Ancient Greek Κόρη (Kóre), is an epithet of Persephone, the Greek goddess of the soul. It expresses an honest rendering of what lies beneath our surfaces. Formica Cora™ was designed with five inner core colors, each carefully composed to eliminate joint lines for a sleek, elegant finish.

This is Beauty, Uninterrupted

Instead of the distinct black lines that border each surface, Formica Cora™ gives you the options to select our preferred core colour, delivering grace and elegance; their own show of inner strength.

Standard Laminate



VS

Formica Cora™



PROPERTIES



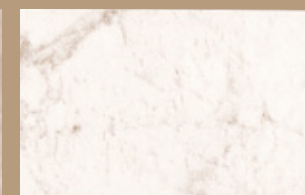
Eliminating dark joint lines



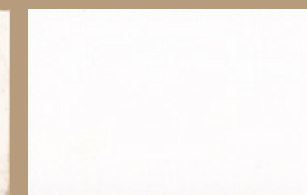
Antimicrobial
(Antibacterial & Antifungal)



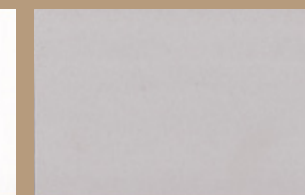
CR8854NT
Alabaster Oak
Partial Crown



CR7377NM
White Jade



CR3200NM
Ultra White



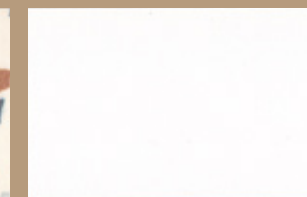
CR0464NM
Graystone



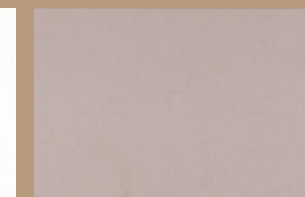
CR8006NT
Avignon Walnut
Straight



CR7387NM
Quartet Chip



CR3200HG
Ultra White



CR7929NM
Oyster Grey



CR5785NT
Ashwood Beige
Straight



CR8830MH
Elemental Concrete



Writable Collection



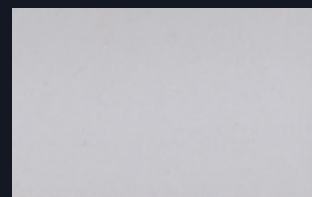
Writable surface Magnetic Board



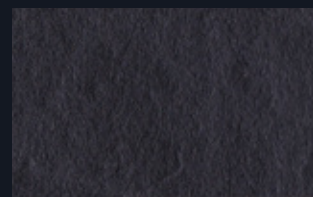
W3200HG
Ultra White



*D8206
Gloss Magnetic
Whiteboard



*DH110
Light Grey Magnetic
Whiteboard



*D8267
Slate Black

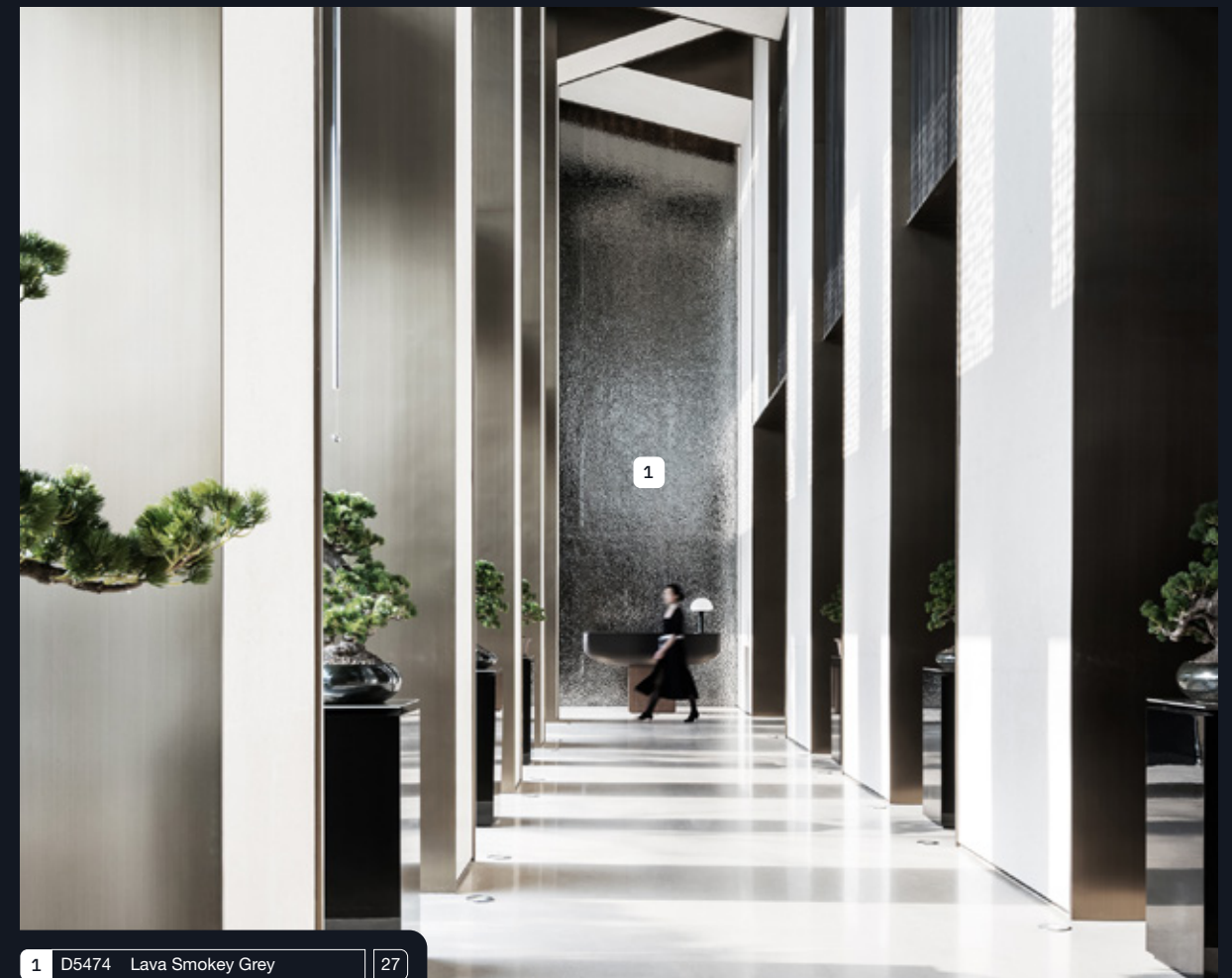
*Formica Magnetic Laminate, a versatile and functional material with embedded iron foil that provides strong magnetic effect. Write on the surface with markers, and seamlessly integrate it with wall or furniture fittings.

Cleaning Tips

- Clean surface with ethyl alcohol after removing the protective film for first-time use. Avoid cleaning agents with fatty substances.
- Write on Magnetic Whiteboard with whiteboard marker. Avoid solvent-based or Xylene markers and cleaners. Store markers horizontally.
- Allow ink to dry before removal. Clean Gloss Magnetic Whiteboard with a dry microfiber cloth, avoid using a sponge.
- Routine cleaning is essential; clean weekly with ethanol for the best results

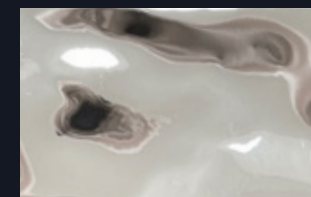
Visit www.formica-asia.info for more details.

DecoMetal®

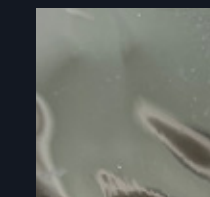


1 D5474 Lava Smokey Grey

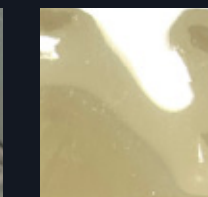
27



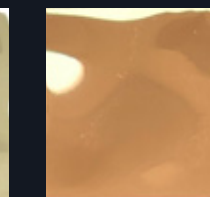
DH141
Lava Natural



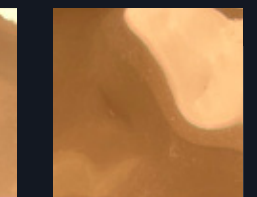
D5474
Lava Smokey Grey



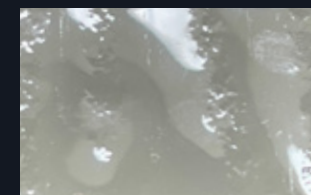
D5471
Lava Goldtone



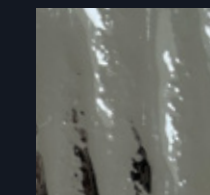
DH089
Lava Coppertone



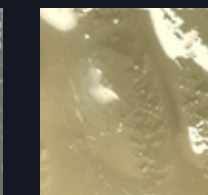
DH144
Lava Tea



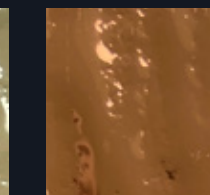
D8281
Cascade Natural



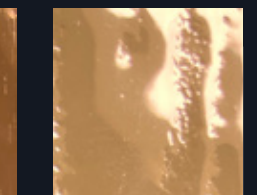
D8284
Cascade Smokey
Grey



D8282
Cascade Goldtone



D8283
Cascade Tea



D8285
Cascade Coppertone

Disclaimer: Due to the natural properties of copper, there might be some colour variation from the samples to the actual products received. Please check with Formica sales representatives before purchase.



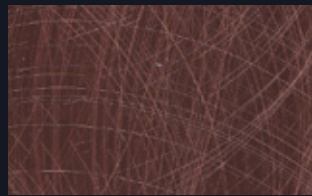
DecoMetal®



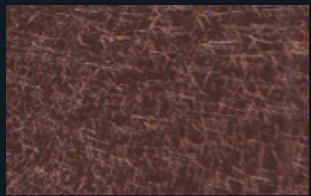
D8021
Light Hammer Copper Antiqued



D2113
Copper Maple Leaves



D8025
Copper Crush



D8030
Copper Plain Crush Stipple



D8291
Crossline Polished Smokey Grey



D8290
Crossline Polished Tea



D8032
Vertical Corrugated Matte Aluminium



D8017
Horizontal Corrugated Matte Anthracite



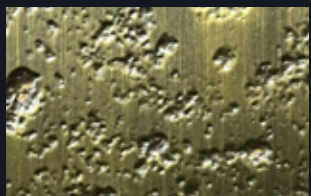
D2802
Dimpled Goldtone



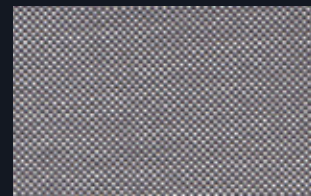
D2807
Dimpled Bronzestone



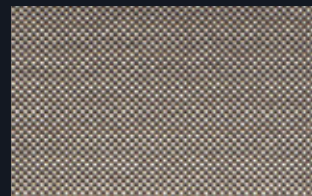
D8277
Moon Light Copper



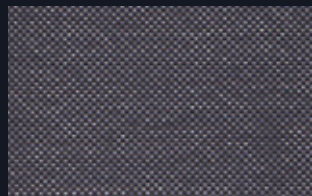
D8278
Moon Brass



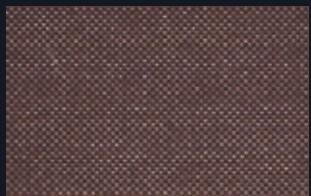
D5306
Plex Argent



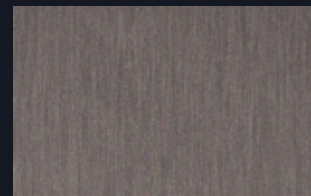
D5309
Plex Gold



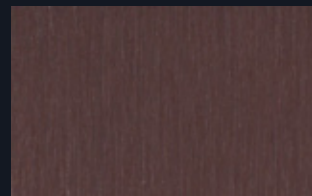
D5310
Plex Graphite



D6486
Plex Bronzestone



D2042
Brushed Goldtone



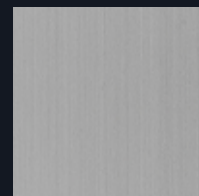
D2126
Bronze Brushed Aluminium



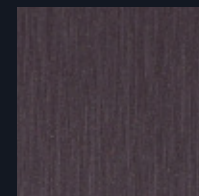
D2052
Brushed Copper Aluminium



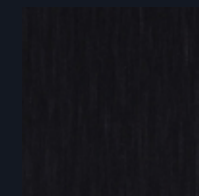
DH138
Bronzestone Longline



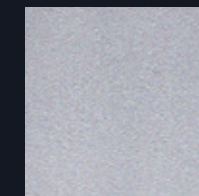
D2178
Brushed Stainless Steel



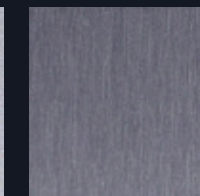
D5312
Brushed Umbra



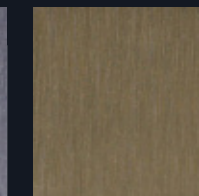
D8105
Aluminium Brushed Black



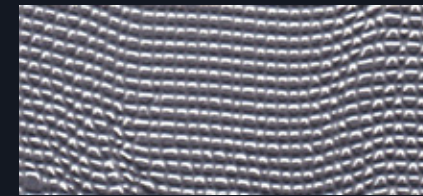
D8122
Anodised Aluminium



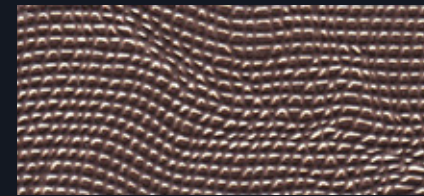
D8124
Silver Brush



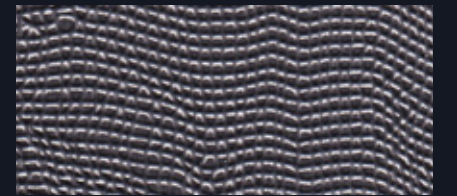
D8123
Gold Brush



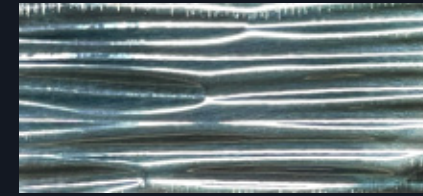
D8034
Aluminium Mesh



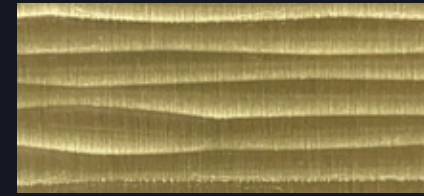
D4899
Bronze Mesh



DH039
Anthracite Mesh



D8286
Cella Polished Natural



D4939
Cella Goldtone



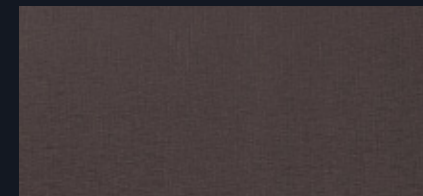
D6484
Craft Argent



D6483
Craft Bronzestone



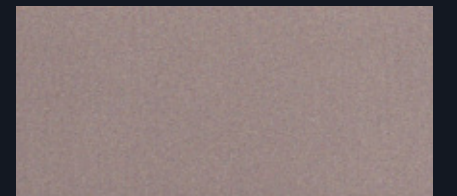
D6485
Craft Umbra



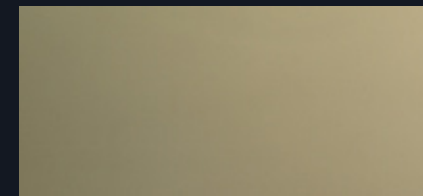
D8040
Cross-Brushed Brownish Grey



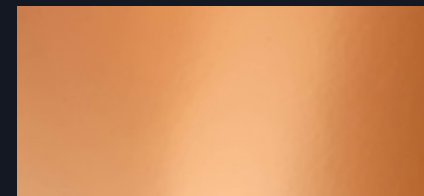
DH036
Cross-Brushed Goldtone



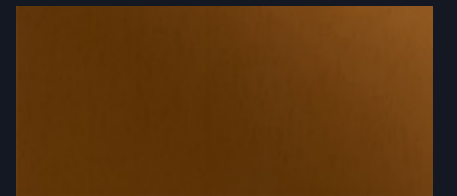
D2006
Matte Bronze Aluminium New



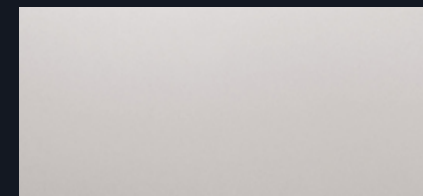
D8004
Polished Gold Aluminium



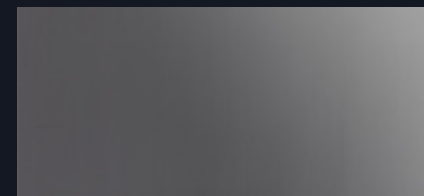
DH008
Mirror Coppertone



DH123
Mirror Tea



D8003
Mirror Aluminium



D1990
Polished Black



DH007
Matte Gunmetal





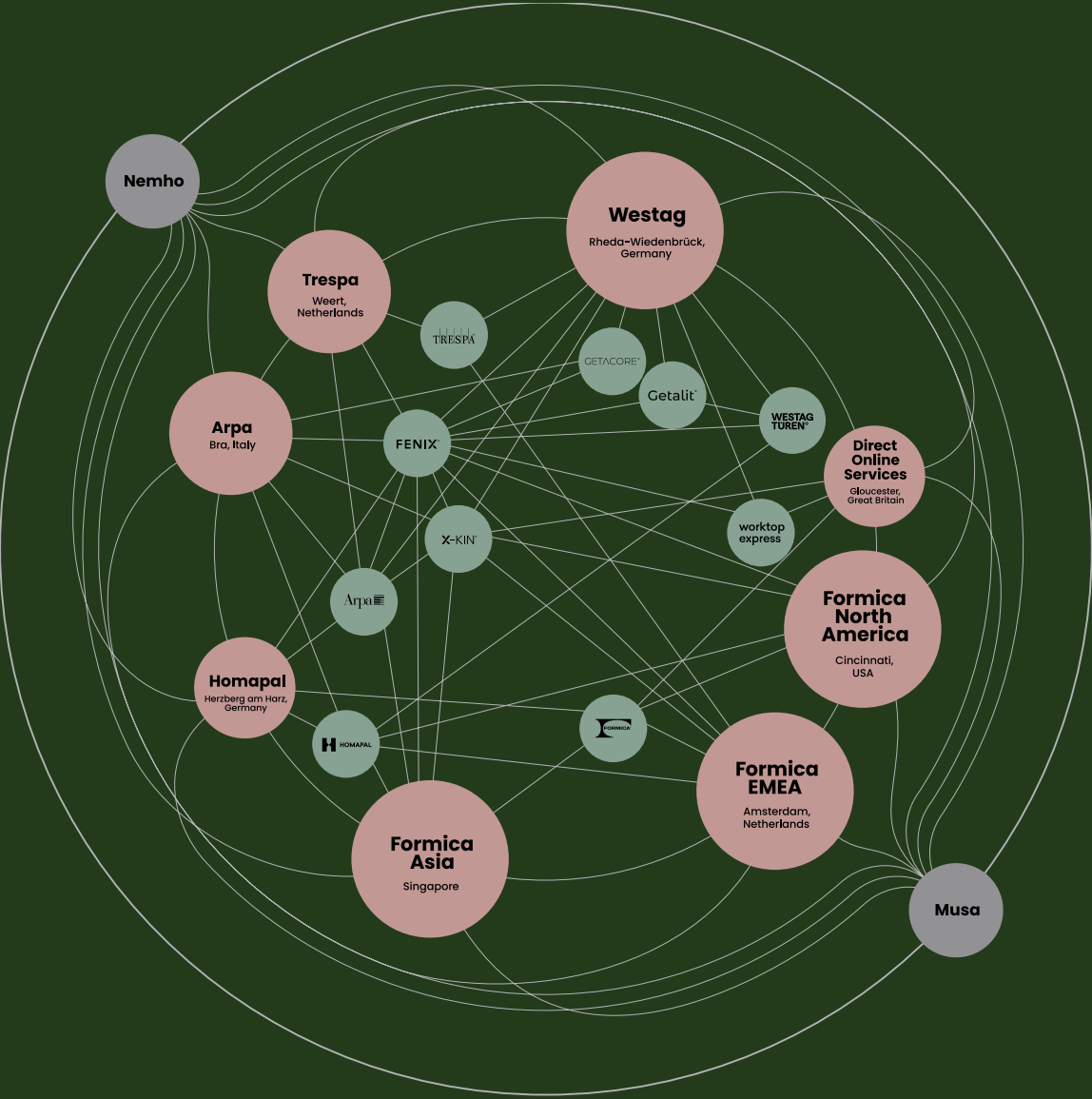
Code	Description	Page	Code	Description	Page	Code	Description	Page
0232UN	Juicy Pink	23	3505CK	Storm Solidz	20	7379MH	Copper Stone	18
0459UN	Brite White	22	3737NT	Light Oak	9	7380MH	Gold Stone	18
0464UN	Graystone	22	3737UN	Light Oak	9	7381MH	Blue Gem	18
0784UN	Peruvian Clay	22	4971PA	Natural Gray Felt	20	7382MH	Bronze Desert	18
0806MH	Battalon	23	4974PA	Green Felt	20	7383HG	Steel Jade	18
0806TM	Battalon	23	5017NM	Watercolor Steel	20	7384UN	Magenta	23
0806UN	Battalon	22	5018NM	Calacatta Cava	17	7387NM	Quartet Chip	20
0812NT	Cinnamon Ash	14	5150NT	American Walnut	7	7389NT	Select Tan Oak	6
0837TM	Graphite	23	5342UN	Earth	22	7391NT	Select Burnt Oak	6
0837UN	Graphite	22	5478NT	Sand Oak	9	7392NT	Select Dry Oak	6
0837VC	Graphite	23	5479LM	Grigio Weave	21	7393NT	Select Fawn Oak	6
0845UN	Spectrum Red	23	5483NT	Mocca Firwood	14	7394NG	Planked Drift Oak	6
0860NT	Blond Afromosia	14	5485NT	Spice Maple	6	7395UN	Tassili	11
0861NT	Olive Afromosia	14	5486NT	Classic Walnut	7	7398D8	Comfort Gray Cherry	13
0862NT	Cherry Afromosia	14	5486UN	Classic Walnut	7	7399D8	Bianco Cherry	13
0867NT	Sand Cherry	7	5487NT	Oiled Walnut	7	7403NM	Nero Marquina	17
0868NT	Beige Oak	9	5883NT	Pecan Woodline	13	7412NG	Planked Raw Oak	6
0869NT	Powdered Oak	9	5887NT	Millennium Oak	9	7433UN	Aqua Marina	23
0870NT	Dawn Cherry	7	6052NT	Cottage Oak	11	7460UN	Ivory	22
0874NT	Hazelnut Cherry	7	6053NT	Chalet Oak	11	7463UN	Sail White	22
0909CK	Black	22	6055D8	Aged Walnut	7	7566UN	Natural Maple	11
0909HG	Black	22	6363HN	Elemental Ash	17	7846UN	Grotto	23
0909TM	Black	22	6372NT	White Washed Birchply	10	7851UN	Spectrum Blue	23
0909UN	Black	22	6401NT	Natural Walnut	10	7858UN	Pumice	22
0933UN	Mission White	22	6402NT	Thermo Walnut	10	7902UN	Platinum	22
0933WB	Mission White	23	6404D8	Bleached Elm	7	7912TM	Storm	23
0961UN	Fog	22	6404NT	Bleached Elm	7	7912UN	Storm	22
0964PT	Veneto Marble	15	6405D8	Bisque Elm	7	7914UN	Marine Blue	23
0992KL	Slate Storm	16	6405NT	Bisque Elm	7	7918UN	Neutral White	22
0993KL	Slate Urban	16	6407D8	Honey Elm	7	7921UN	Birch	22
0995PT	Venetian Plaster Urban	15	6407NT	Honey Elm	7	7923UN	Surf	22
1040UN	Alpino	22	6412NG	Oak Riftwood	13	7928TM	Mouse	23
1079NT	Natural Oak	9	6444LM	Clay Textile	21	7928UN	Mouse	22
1079ST	Natural Oak	9	6445LM	Greige Textile	21	7929UN	Oyster Grey	22
1093UN	Aries	22	6446LM	Charcoal Textile	21	7940UN	Spectrum Yellow	23
1541NT	Carbon Cedar	6	7012NT	Amber Maple	11	7949HG	White	23
2010UN	Malibu	22	7157UN	Cosmic Dawn	19	7966UN	New Burgundy	23
2020UN	Tornado	22	7158SD	Cosmic Dusk	19	8140UN	Brick	23
2567UN	Copper Beech New	11	7168UN	Metal Pearl Silver	19	8233UN	Violet Ash	23
2726NT	Natural Beech	13	7188NT	Lincoln Walnut	10	8238UN	Blush	23
3200UN	Ultra White	22	7188UN	Lincoln Walnut	10	8244UN	Night Forest	23
3210UN	Levante	23	7197UN	Dover White	22	8387NM	Black Chip	20
3460HG	Calacatta Marble	17	7377MH	White Jade	18	8577NT	Fjord Elm	14
3476HN	Jet Sequoia	17	7378MH	Silver Jade	18	8578NT	Sund Elm	14

Code	Description	Page	Code	Description	Page	Code	Description	Page
8734UN	Lavender Ash	23	9437D8	Toffee Blackwood	14	D8032	Vertical Corrugated Matte Aluminium	28
8793NM	Green Slate	23	9451NT	Slate Cherry	13	D8034	Aluminium Mesh	29
8793UN	Green Slate	23	9510CK	Layered Black Sand	17	D8040	Cross-Brushed Brownish Grey	29
8794UN	Enamel	23	9511CK	Layered Sand	17	D8105	Aluminium Brushed Black	28
8796UN	Algae	23	9532LM	Beige Plaid	21	D8122	Anodised Aluminium	28
8797LM	Raw Weave	21	9658NG	Planked Havana Oak	6	D8123	Gold Brush	28
8801C8	Aged Ash Cross	12	9966NT	Hill Top Maple	11	D8124	Silver Brush	28
8812CK	Tinted Paper Terrazzo	21	CR0464NM	Graystone	25	D8206	Gloss Magnetic Whiteboard	26
8816SD	Frosted Champagne	19	CR3200HG	Ultra White	25	D8267	Slate Black	26
8818SD	Frosted Graphite	19	CR3200NM	Ultra White	25	D8277	Moon Light Copper	28
8821UN	Just Blue	23	CR5785NT	Ashwood Beige	25	D8278	Moon Brass	28
8822UN	Denim	23	CR7377NM	White Jade	25	D8281	Cascade Natural	27
8830HN	Elemental Concrete	17	CR7387NM	Quartet Chip	25	D8282	Cascade Goldtone	27
8841D8	White Ash	8	CR7929NM	Oyster Grey	25	D8283	Cascade Tea	27
8842D8	Weathered Ash	8	CR8006NT	Avignon Walnut	25	D8284	Cascade Smokey Grey	27
8843D8	Natural Ash	8	CR8830MH	Elemental Concrete	25	D8285	Cascade Coppertone	27
8843NT	Natural Ash	8	CR8854NT	Alabaster Oak	25	D8286	Cella Polished Natural	29
8844D8	Aged Ash	8	D1990	Polished Black	29	D8290	Crossline Polished Tea	28
8844NT	Aged Ash	8	D2006	Matte Bronze Aluminium New	29	D8291	Crossline Polished Smokey Grey	28
8845NT	Bleached Legno	8	D2042	Brushed Goldtone	28	DH007	Matte Gunmetal	29
8846D8	Oiled Legno	8	D2052	Brushed Copper Aluminium	28	DH008	Mirror Coppertone	29
8846NT	Oiled Legno	8	D2113	Copper Maple Leaves	28	DH036	Cross-Brushed Goldtone	29
8847D8	Jarra Legno	8	D2126	Bronze Brushed Aluminium	28	DH039	Anthracite Mesh	29
8847NT	Jarra Legno	8	D2178	Brushed Stainless Steel	28	DH089	Lava Coppertone	27
8848D8	Blacken Legno	8	D2802	Dimpled Goldtone	28	DH110	Light Grey Magnetic Whiteboard	26
8848NT	Blacken Legno	8	D2807	Dimpled Bronzestone	28	DH123	Mirror Tea	29
8849NT	Natural Teak	13	D4899	Bronze Mesh	29	DH138	Bronzestone Longline	28
8853D8	Rural Oak	9	D4939	Cella Goldtone	29	DH141	Lava Natural	27
8853NT	Rural Oak	9	D5306	Plex Argent	28	DH144	Lava Tea	27
8854NT	Alabaster Oak	9	D5309	Plex Gold	28	T116NT	Teak Allover	13
8860NT	Weathered Teak	13	D5310	Plex Graphite	28	W3200HG	Ultra White	26
8905NT	Waxed Maple	11	D5312	Brushed Umbra	28			
8906NT	Danish Maple	11	D5471	Lava Goldtone	27			
8910NT	Raw Birchply	10	D5474	Lava Smokey Grey	27			
8967NT	Logan Oak	9	D6483	Craft Bronzestone	29			
9205UN	Legno Finition Brown	13	D6484	Craft Argent	29			
9222NT	Grayed Maple	11	D6485	Craft Umbra	29			
9281NG	Ash Riftwood	13	D6486	Plex Bronzestone	28			
9287LM	Grigio Anthracite Weave	21	D8003	Mirror Aluminium	29			
9306NM	White Bardiglio	17	D8004	Polished Gold Aluminium	29			
9312NG	Planked Urban Oak	6	D8017	Horizontal Corrugated Matte Anthracite	28			
9365L	Bronze Leather	19	D8021	Light Hammer Copper Antiqued	28			
9366L	Smoky Shimmer Leather	19	D8025	Copper Crush	28			
9436D8	Dry Blackwood	14	D8030	Copper Plain Crush Stipple	28			

ABOUT THE GROUP

We are part of the leading global group in surface materials. We are FENIX, Formica, Homapal, Arpa, Westag, Trespa and Direct Online Services. All active in material technology.

Panels, doors, worktops: our products range from HPL to solid surface, and from decorative metals to FENIX. Our 6,000 employees work in 40 countries around the world and our products are marketed in many more.



FEEL IN EVERY DETAIL

We are not just about creating physical spaces to live, work and play in. We are about setting the stage for a warm and aspirational future. For that reason, we take extraordinary care with the spaces you create. And ensure every detail is crafted to be felt, by touch and by the heart.



SUSTAINABILITY

Formica Group is a leading provider of stylistic, smart and sustainable surfacing solutions for commercial and residential customers worldwide. Since 1913, the heritage of Formica Group has been founded on quality, service, and innovative product lines.

As the world's largest manufacturer of High Pressure Laminate (HPL), our sustainability policy is built upon being "good" and having a positive impact on the world around us. Our goal is carbon neutrality by 2030 without losing sight of the product functionality our customers require.

SINCE 1913, FORMICA® DESIGNS FOR TODAY WITH FOREVER IN MIND.



Herbert A. Faber Daniel J. O'Conor

FORMICA'S FOUNDING

Formica® was founded in Cincinnati in 1913 by two young men, Herbert A. Faber and Daniel J. O'Conor. Their high-pressure plastic resins were intended to serve as electrical insulators replacing mineral Mica, which was used for that purpose at the time. Hence the name "Formica" was chosen. World-renowned artists and architects had also begun to recognize the potential of the decorative laminates and specified them for modernist and art deco interiors.

FORMICA'S SERVICES

Formica® offers a complete range of surface decorative products with Protec+® technology (High Pressure Laminate, Formica® Compact®, ColorCore®, Formica® Cora™ and Formica® Custom Graphics™), premium decorative products (DecoMetal® and FENIX®) and a range of functional products (CHguard™). All Formica® High Pressure Laminates conform to European BS EN438: 2008 standards. And meanwhile, we have got the certification of ISO 9001: 2015, ISO 14001: 2015, ISO 45001:2018, and GREENGUARD. Formica® owns manufacturing bases worldwide, with five located in Asia. Major bases are located in Shanghai (China), Jiujiang (China), Hsinchu (Taiwan), Bangkok (Thailand) and Ahmedabad (India).

FORMICA'S LOGO HISTORY



As a professional word, "Formica" has been recorded in The Oxford English Dictionary as a replacement for decorative laminates.

CHAMPIONING SUSTAINABILITY THROUGH FORMICA® SURFACES.



GREENGUARD CERTIFICATION

Formica Group has taken significant steps to ensure that its products promote a healthy indoor air quality in homes, offices, schools and other indoor environments. According to the US Environmental Protection Agency (USEPA), the most effective way to reduce indoor air pollution is to reduce or eliminate harmful chemical emissions. Formica® takes pride in meeting the strict emissions limits of the GREENGUARD Environmental Institute and in achieving GREENGUARD Certification for Indoor Air Quality for Formica® Laminates. Formica® Laminates, ColorCore®, Compact® and DecoMetal® are certified in Asia according to the GREENGUARD Certification and GREENGUARD Gold Certification standards for Indoor Air Quality. Formica® FRguard® is certified with GREENGUARD Certification for Indoor Air Quality.

SINGAPORE GREEN BUILDING PRODUCT CERTIFICATION

The achievement of SGBP certification is a testament to Formica Group's commitment towards making sustainable principles. We are committed to creating innovative products that promote a healthier environment to support sustainable design, and protecting vital resources for future needs via our ongoing efforts to put our green principles in practice through life cycle assessment (LCA), sustainable operations and carbon reduction.

SINGAPORE GREEN LABEL

Formica® Laminates and Formica® Compact® Grade Laminate are Singapore Green Label certified by the Singapore Environment Council under "Environmentally Preferred Surface Covering".

